



THE SHOP

PRODUCTION DESIGN

<gallagher>

THE SHOP

RENDERINGS

«gallagher»

THE SHOP - RENDERINGS



THE SHOP - RENDERINGS



THE SHOP - RENDERINGS



THE SHOP - RENDERINGS



THE SHOP - RENDERINGS



THE SHOP - RENDERINGS



THE SHOP - RENDERINGS



THE SHOP - RENDERINGS



THE SHOP - RENDERINGS

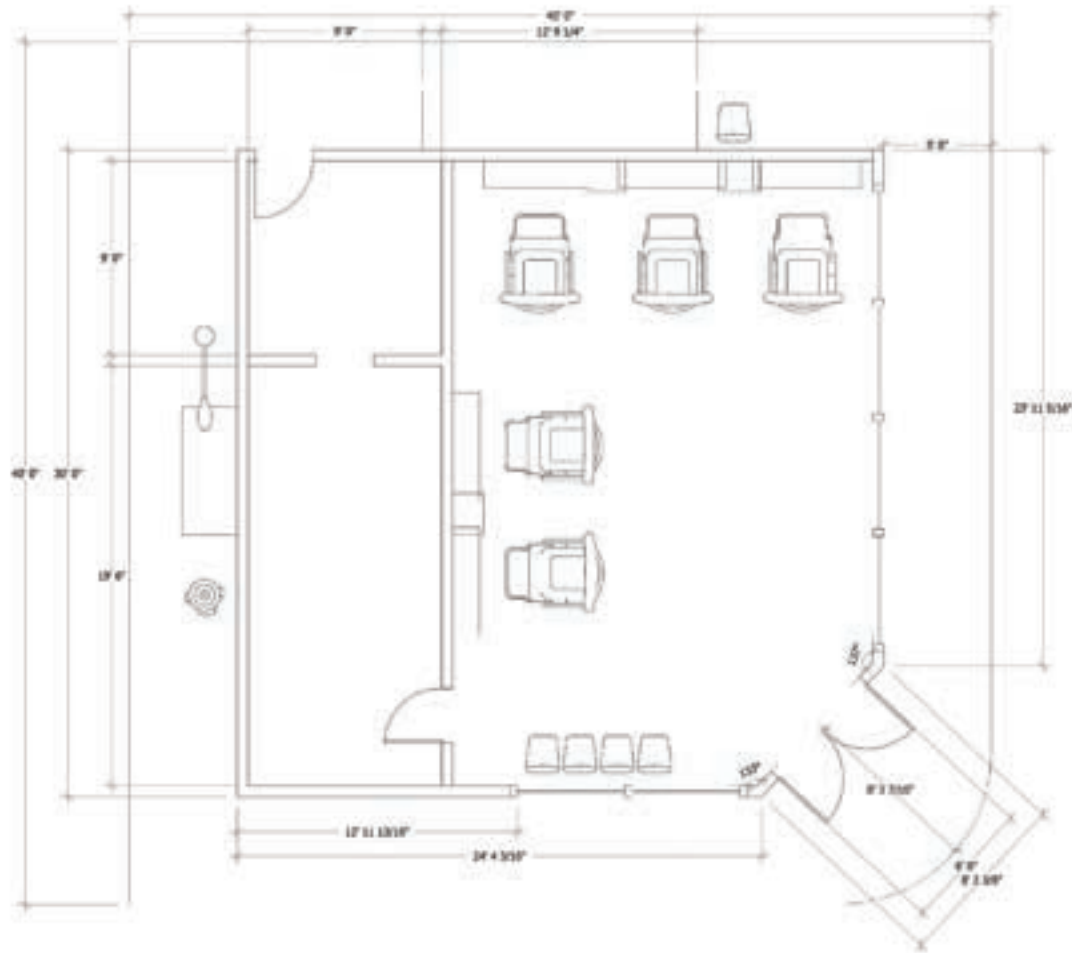


THE SHOP

ENGINEERING DRAWINGS

«gallagher»

THE SHOP - ENGINEERING DRAWINGS



01 TOP VIEW/PLAN
1/4" = 1'-0"

covered overall area 1485.04 sq. ft.

gallagher
200 E. WILSON BLVD.
LONDON, ONTARIO, CANADA

COMPLETION BARBERS CP
300 E. WILSON BLVD.
LONDON, ONTARIO, CANADA

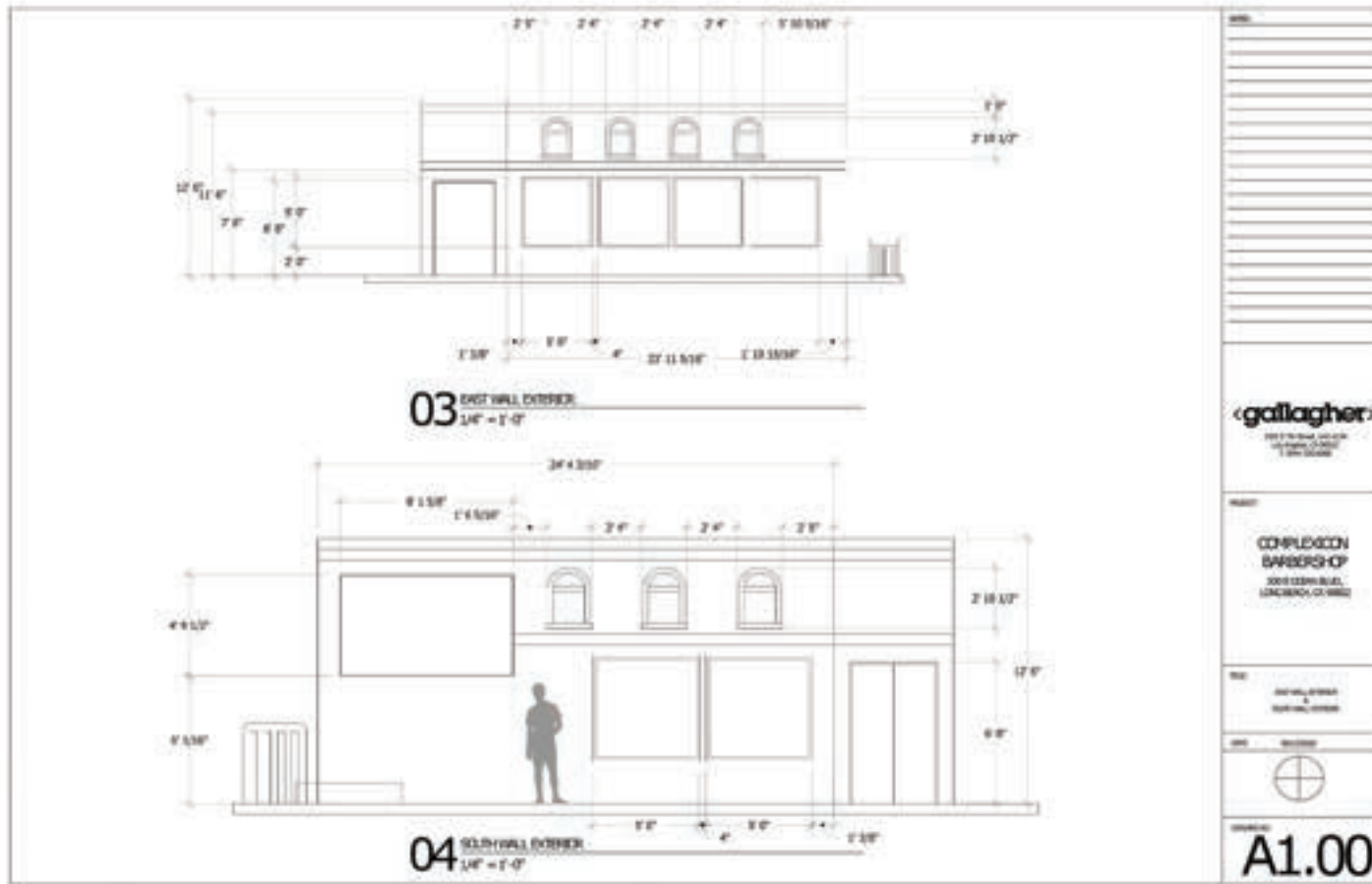
DATE: 08/20/2018

SCALE: 1/4" = 1'-0"

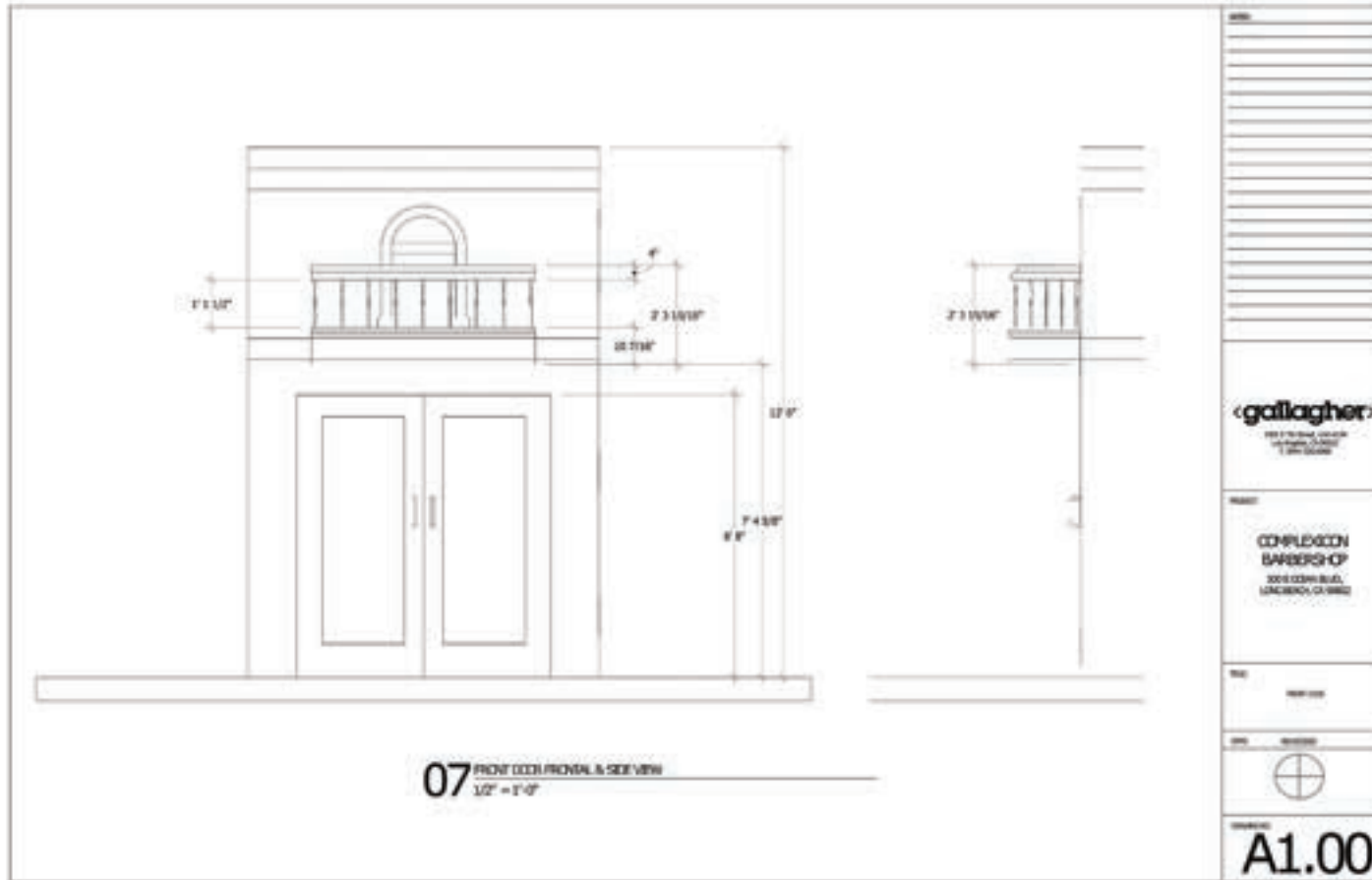
N

A1.00

THE SHOP - ENGINEERING DRAWINGS



THE SHOP - ENGINEERING DRAWINGS



THE SHOP - ENGINEERING DRAWINGS

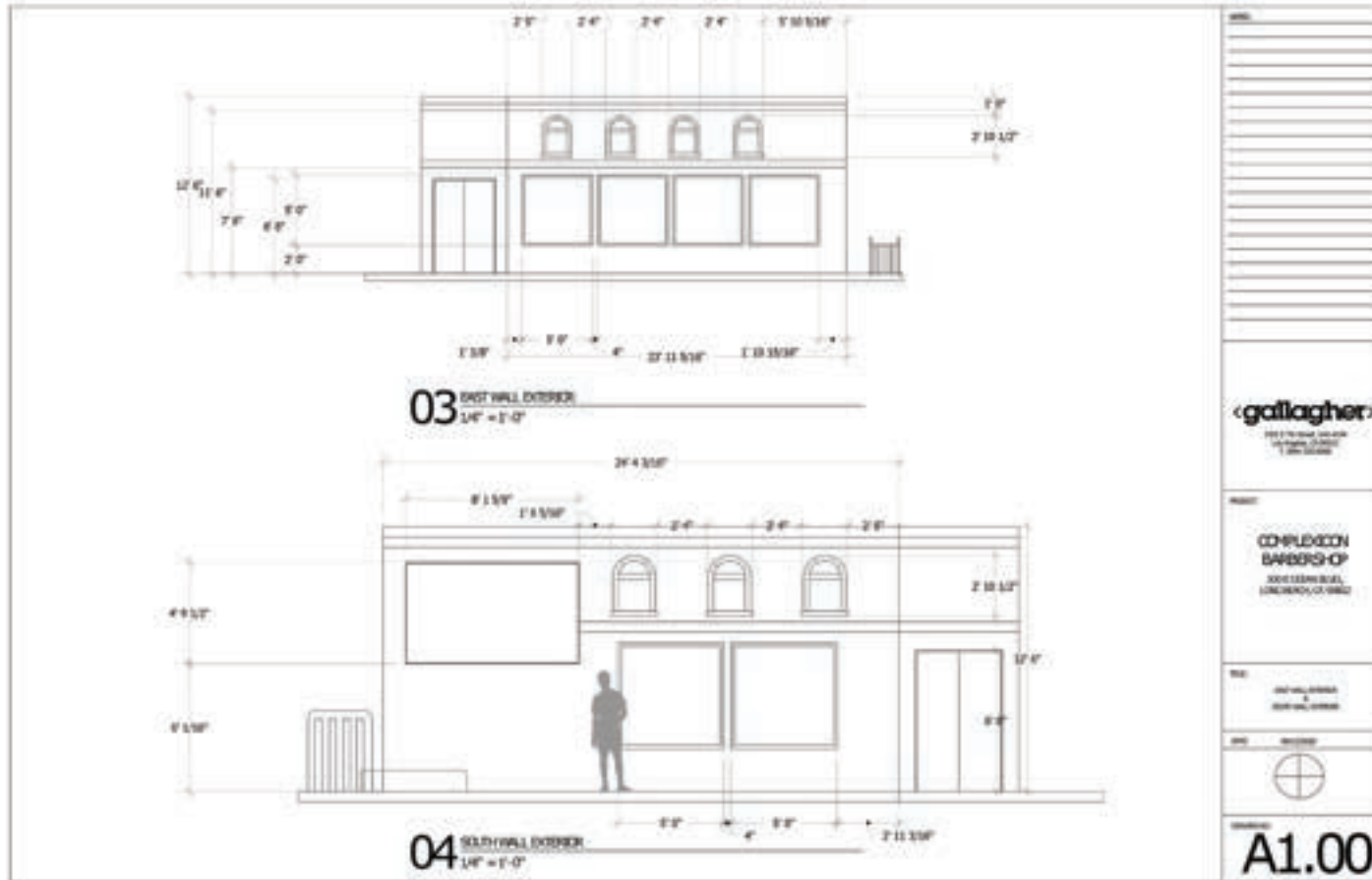
08 FRONT BARBER STATION
 1/4" = 1'-0"

09 BARBER STATION ISOMETRIC VIEW
 1/4" = 1'-0"

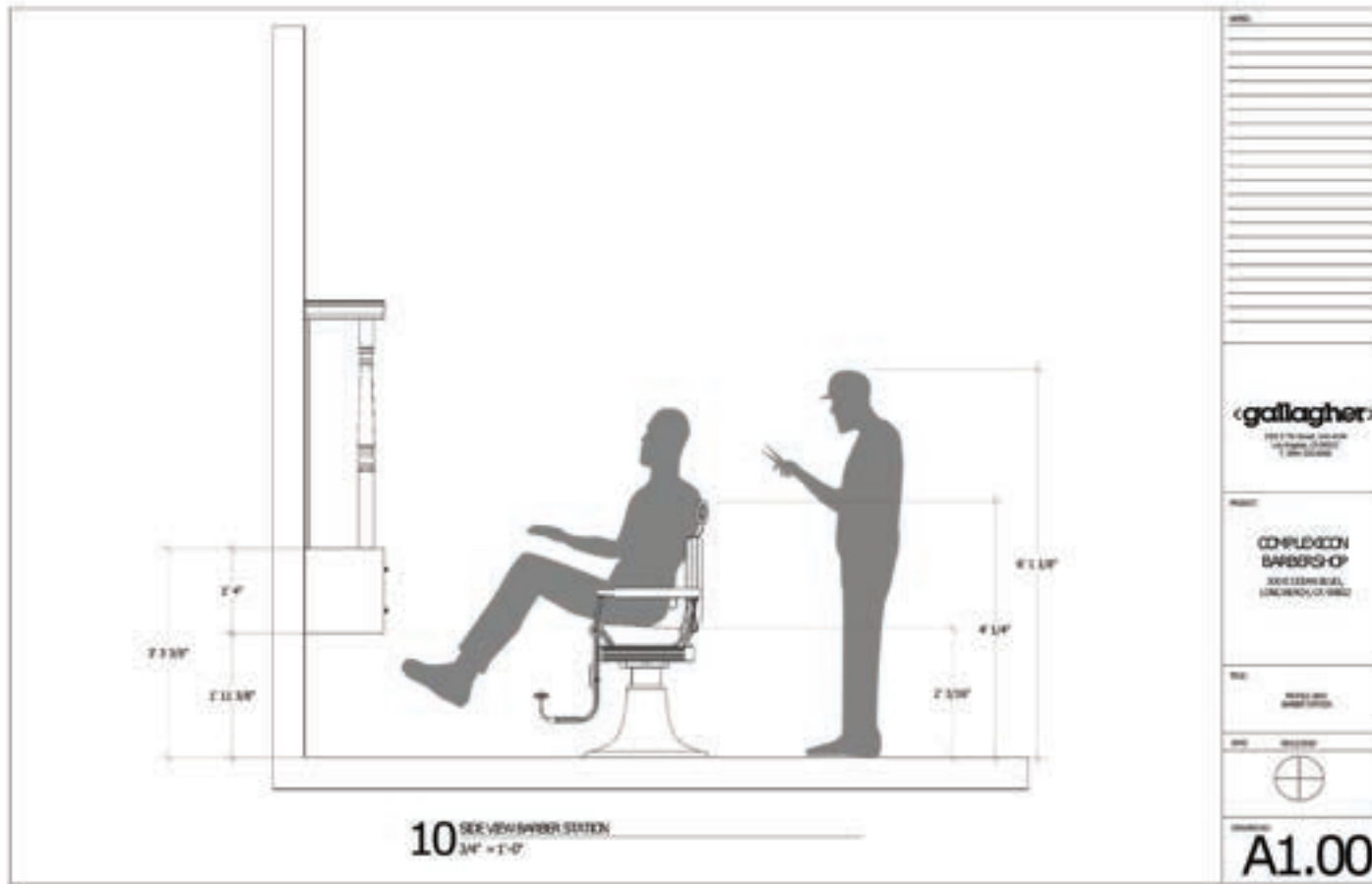
The drawings show a barber station with a top surface of 42.500" wide and 31.000" deep. The height of the side panels is 37.000". The base is 24" high and features three drawers on each side. The isometric view shows the station is 24" high and 27" deep at the base.

gallagher	
200 E. MAIN ST., SUITE 100 LACONIA, NH 03240	
COMPLECON BARBERS-OF 2001 CEDAR BLVD. LACONIA, NH 03240	
A1.00	

THE SHOP - ENGINEERING DRAWINGS



THE SHOP - ENGINEERING DRAWINGS

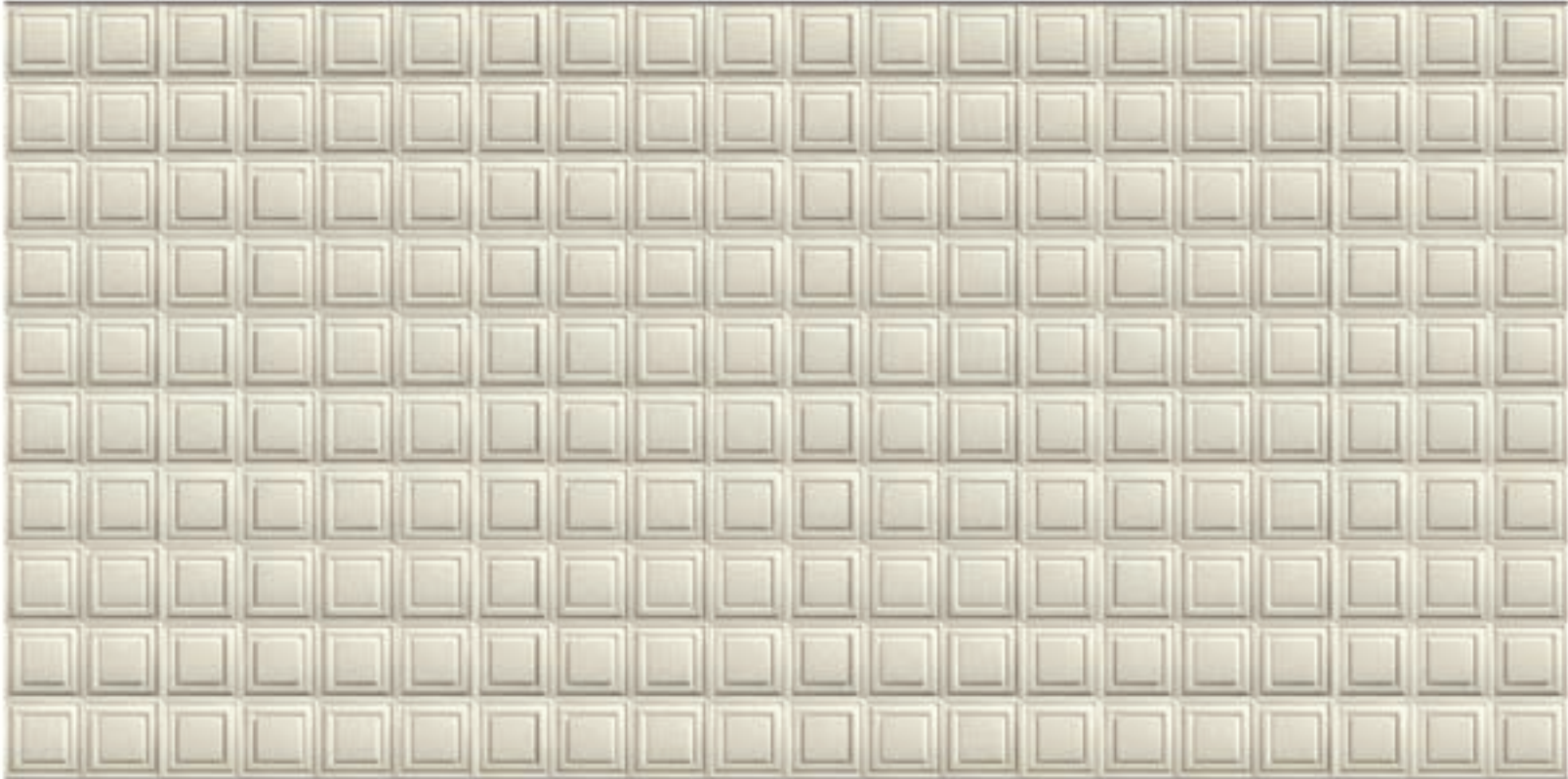


THE SHOP

MOOD BOARD
SAMPLES / COLORS / MATERIALS

«gallagher»

THE SHOP - SOFTCEILING



THE SHOP - SOFTCEILING



THE SHOP - STAINED WOOD FINISH



THE SHOP - STAINED WOOD FINISH



THE SHOP - CONCRETE FINISH



THE SHOP - CONCRETE FINISH



THE SHOP - BLACK PAINT FINISH



THE SHOP - GOLD PAINT FINISH



THE SHOP

SET DRESSING & PROPS

«gallagher»

THE SHOP - INT. TRACK LIGHTING ABOVE WINDOWS



THE SHOP - INT. GLOBE LIGHTING ABOVE STATIONS



THE SHOP - EXT. GOOSENECKLAMPS



THE SHOP - EXT. STREET LAMP (10' HIGH)



THE SHOP - EXT. BUS BENCH



THE SHOP - EXT. COMMERCIAL TRASH CAN



THE SHOP - EXT. STREET SIGN POST



THE SHOP - EXT. TREE GATE



THE SHOP - HARDWARE / VINTAGE BRASS PUSH PLATES FOR DOORS



THE SHOP - HARDWARE / VINTAGE BRONZE DOOR PULLS



THE SHOP - HARDWARE / VINTAGE DEADBOLT LOCK

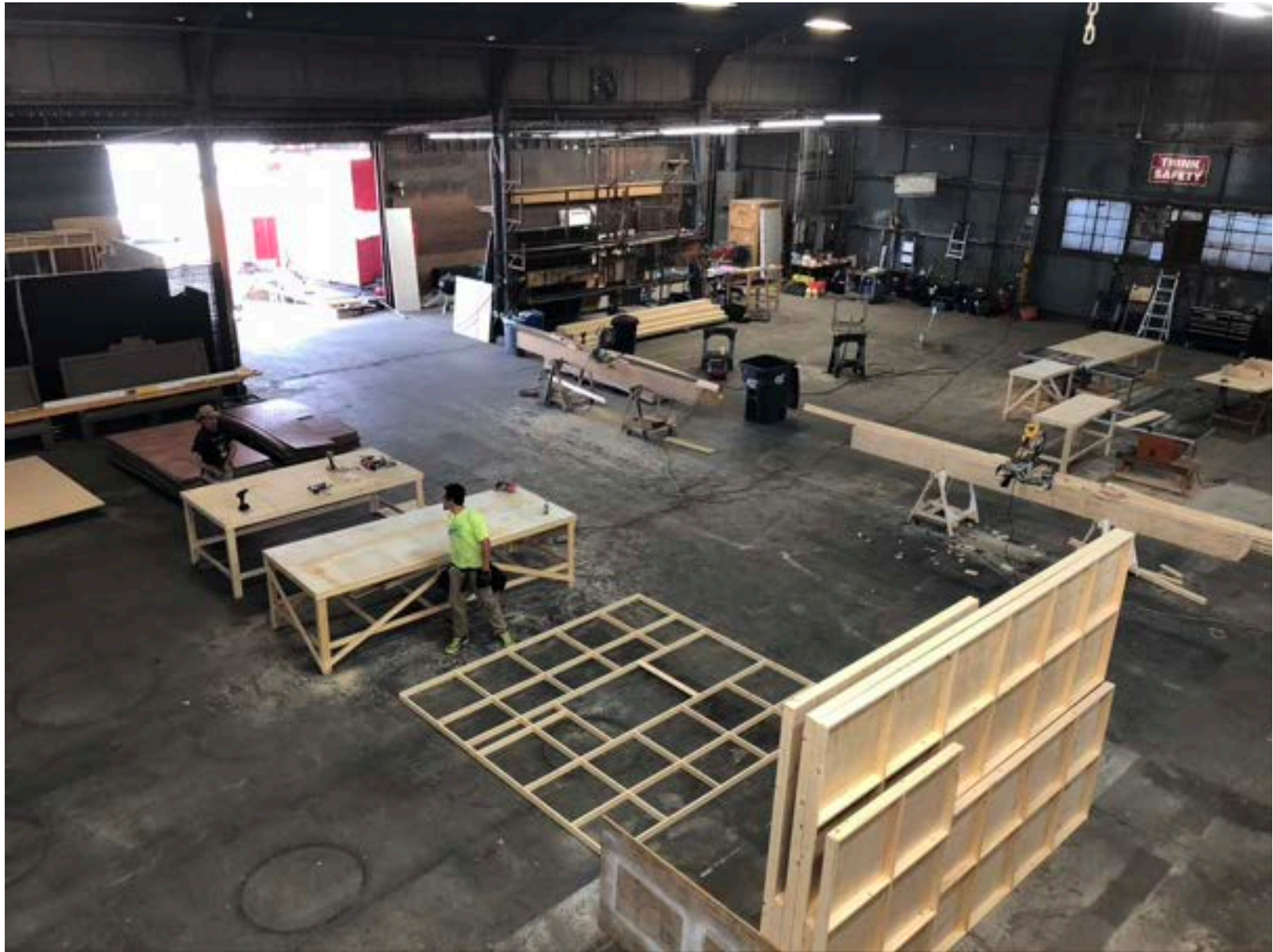


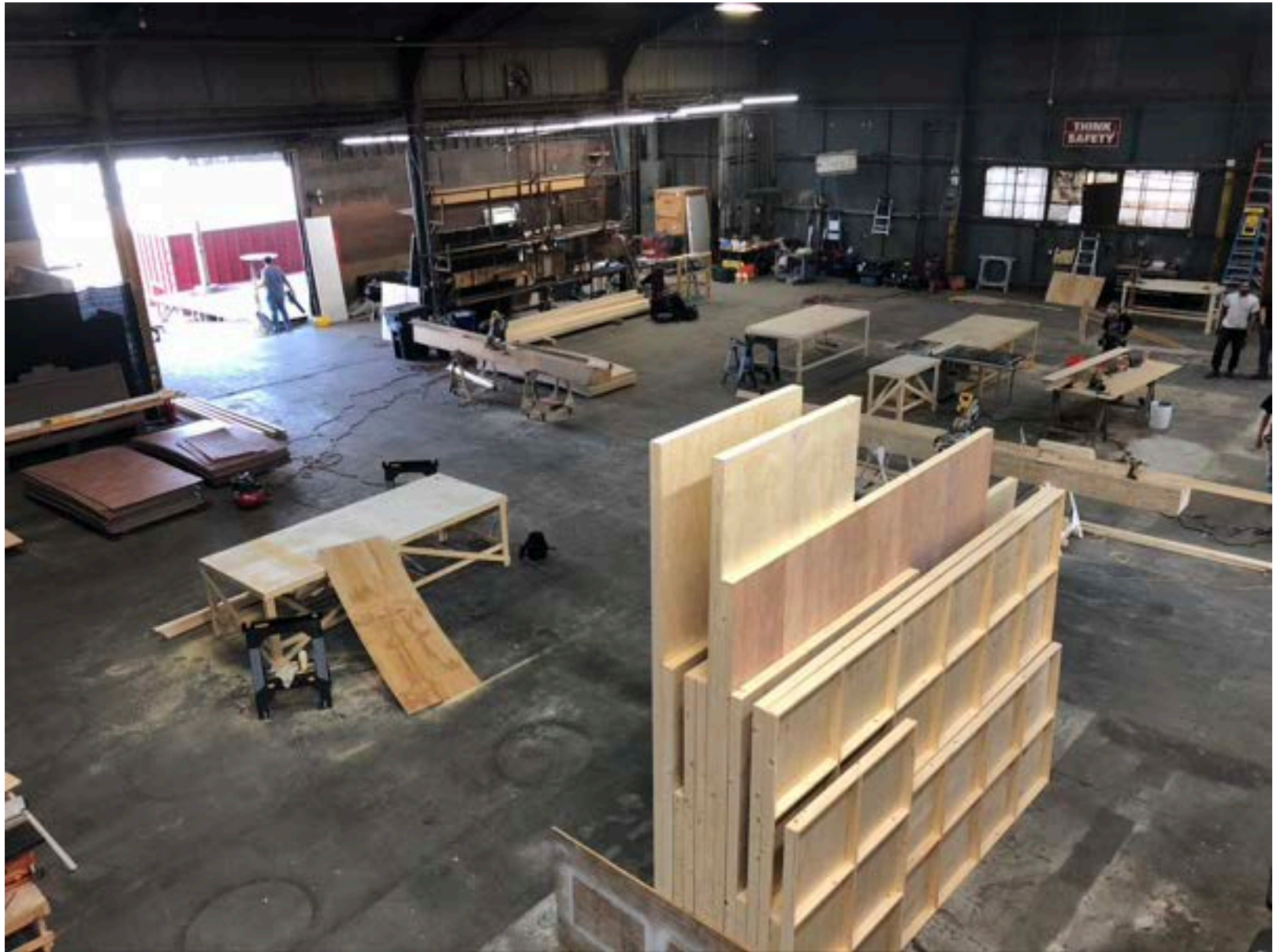
THE SHOP - HARDWARE / VINTAGE YALE DOOR CLOSER

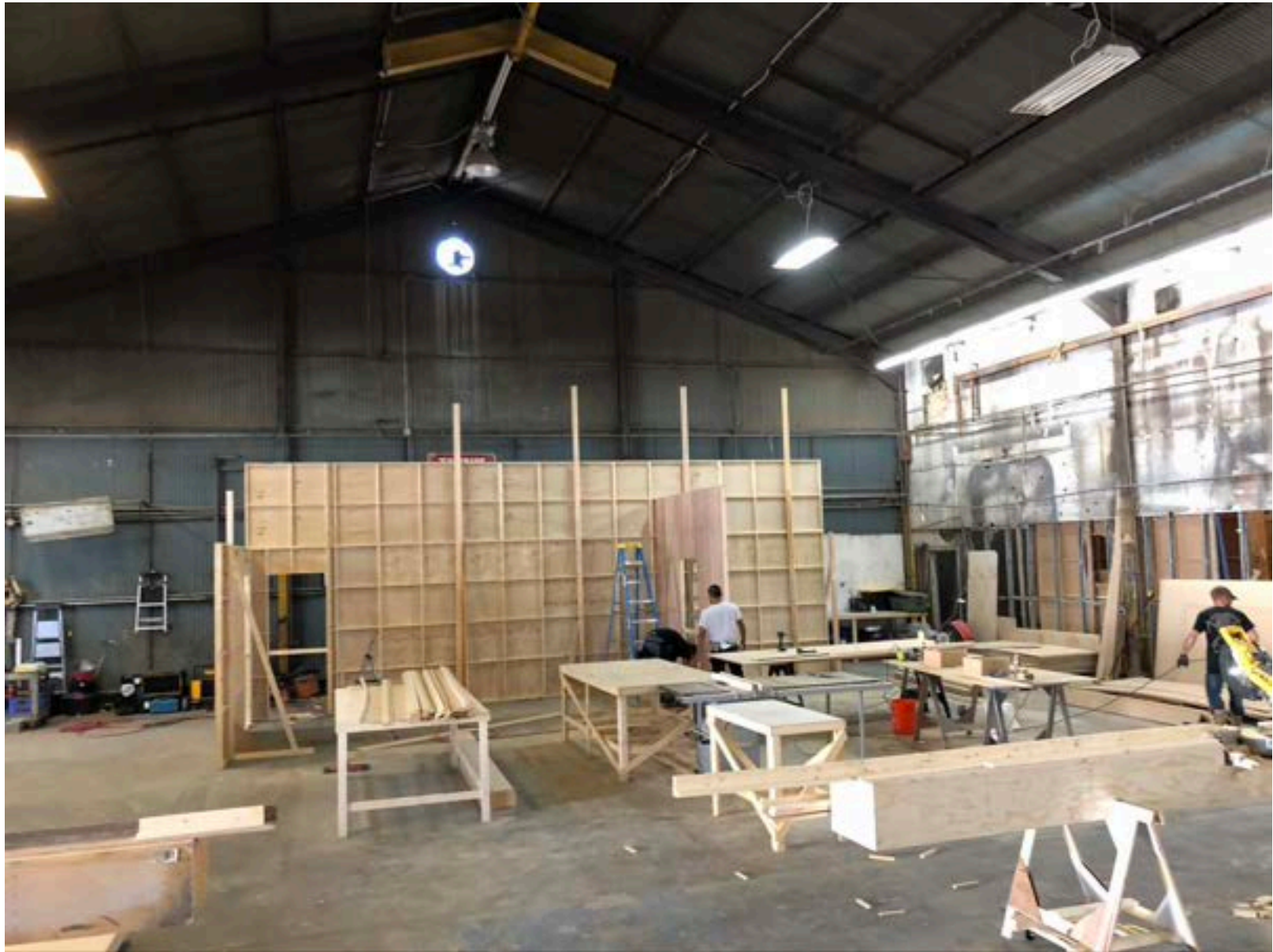


THE SHOP - HARDWARE / VINTAGE BRASS DOOR KNOBS, HANDLES, & MORE

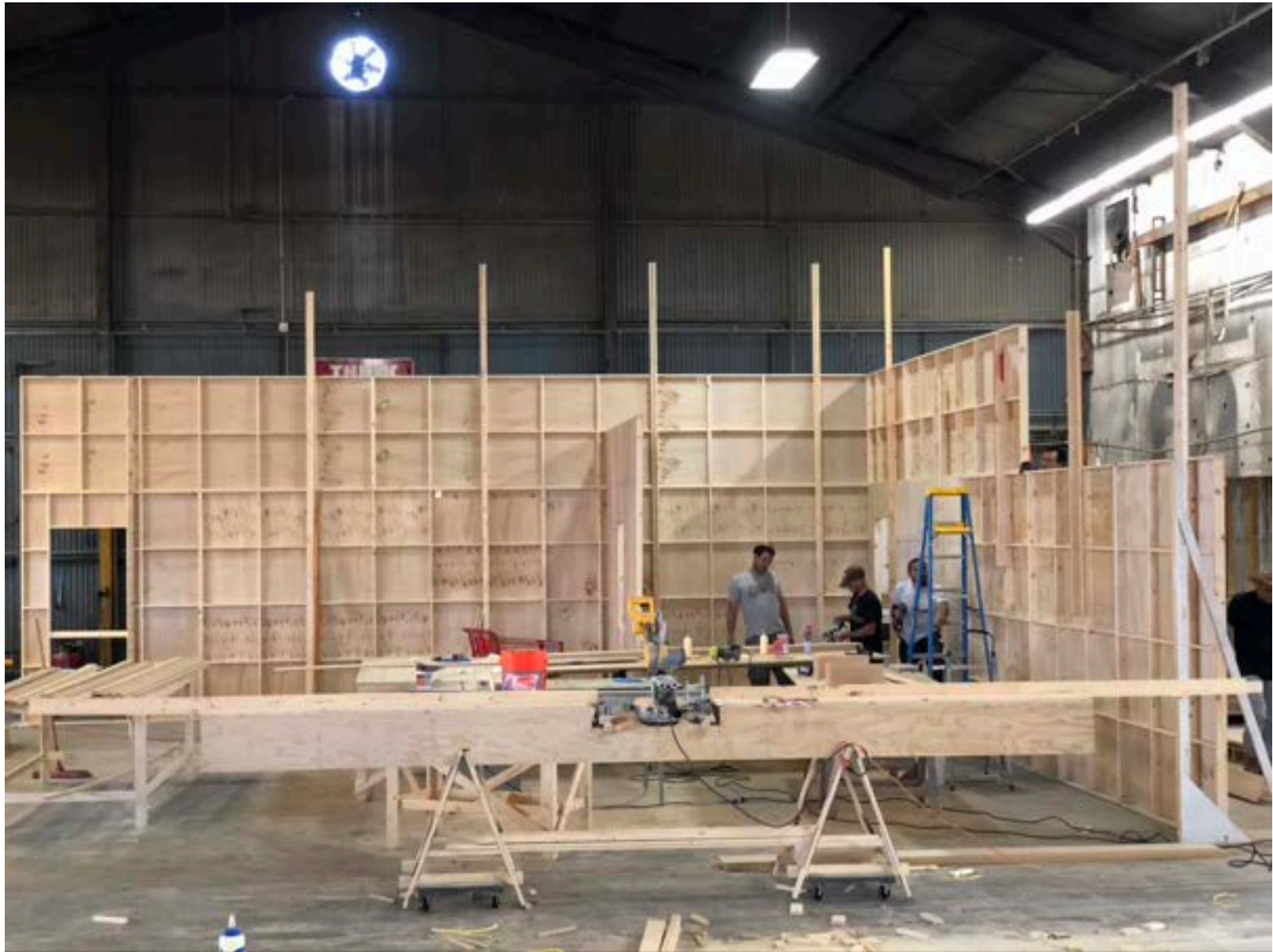








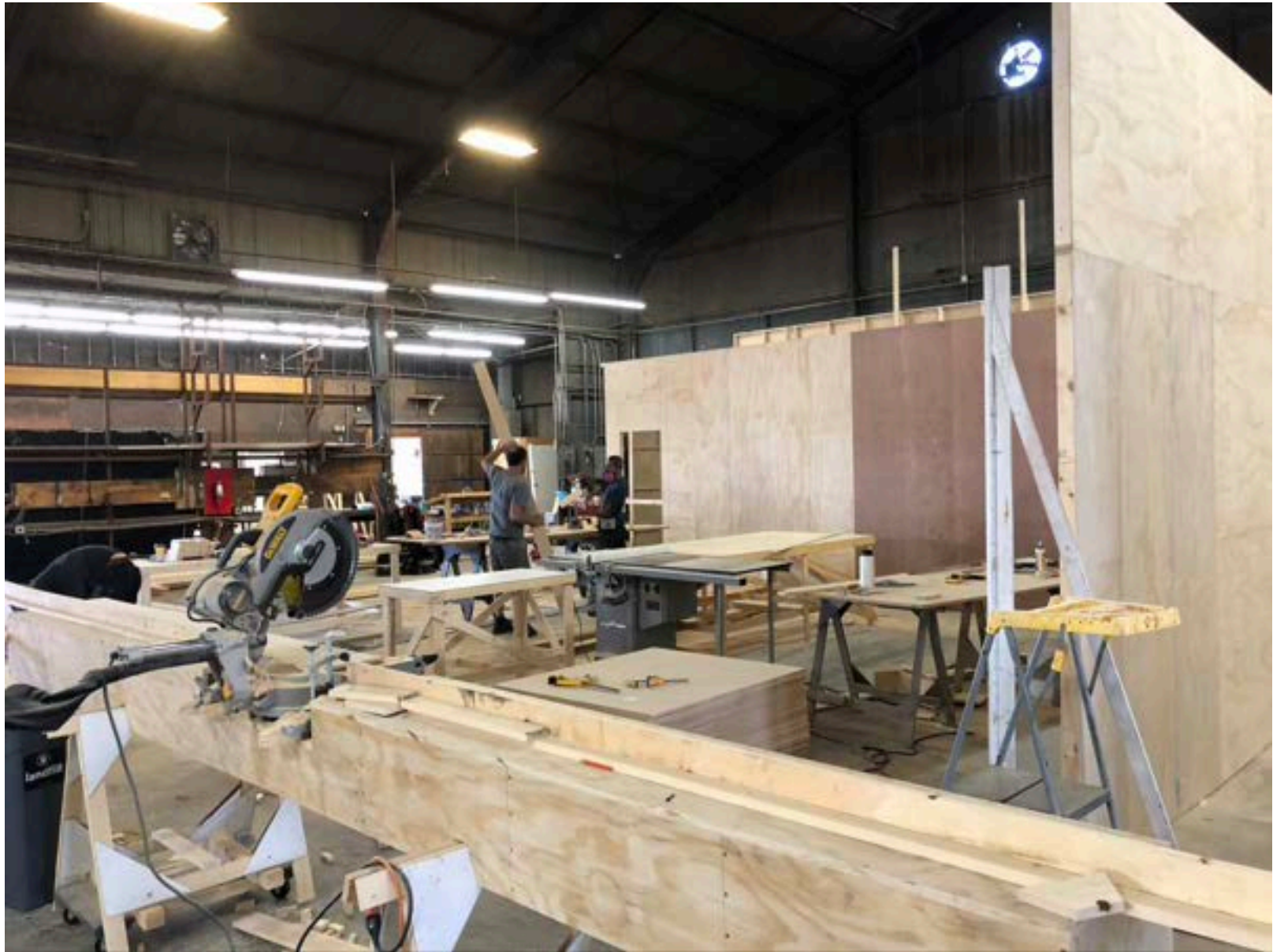


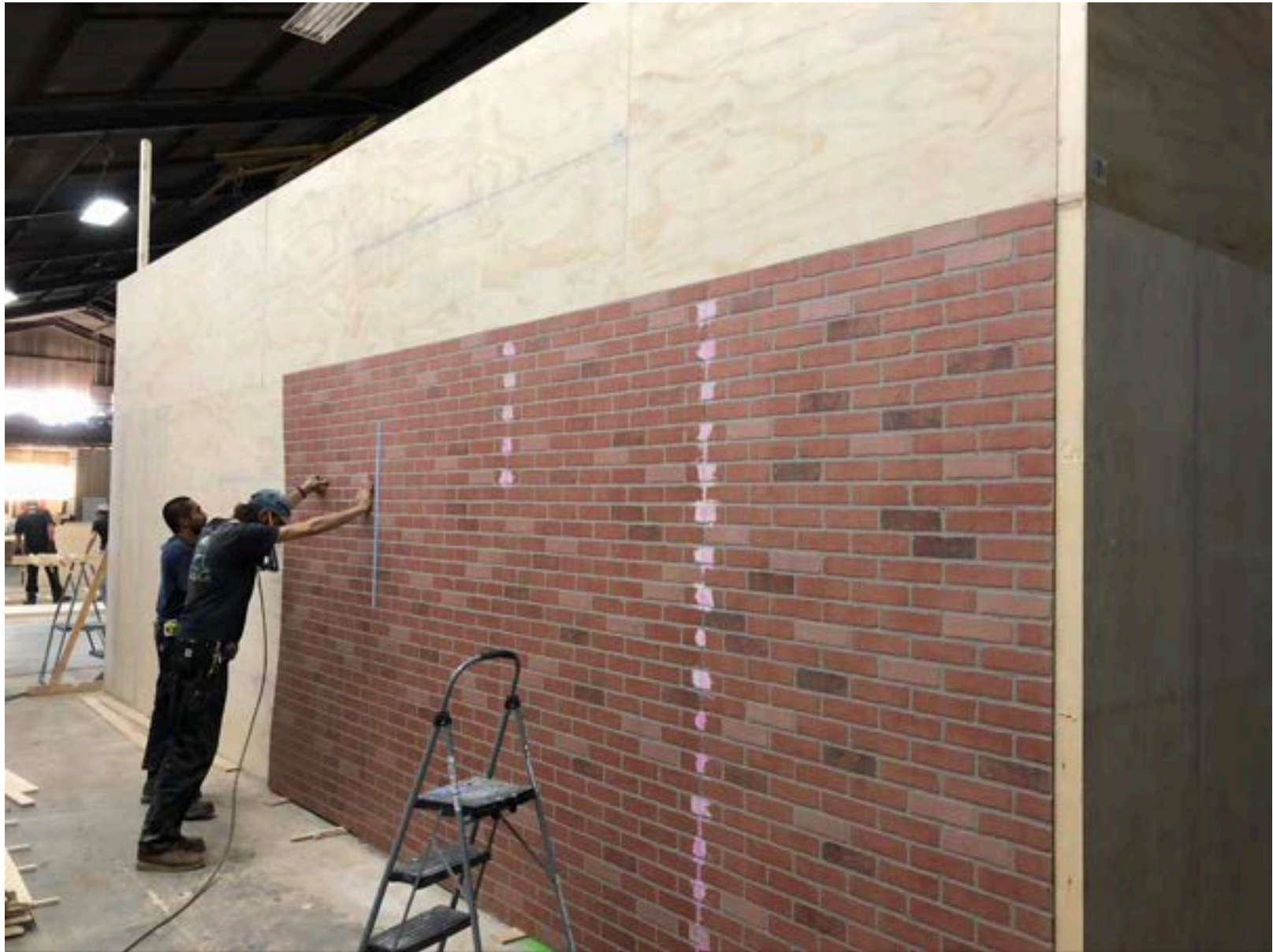










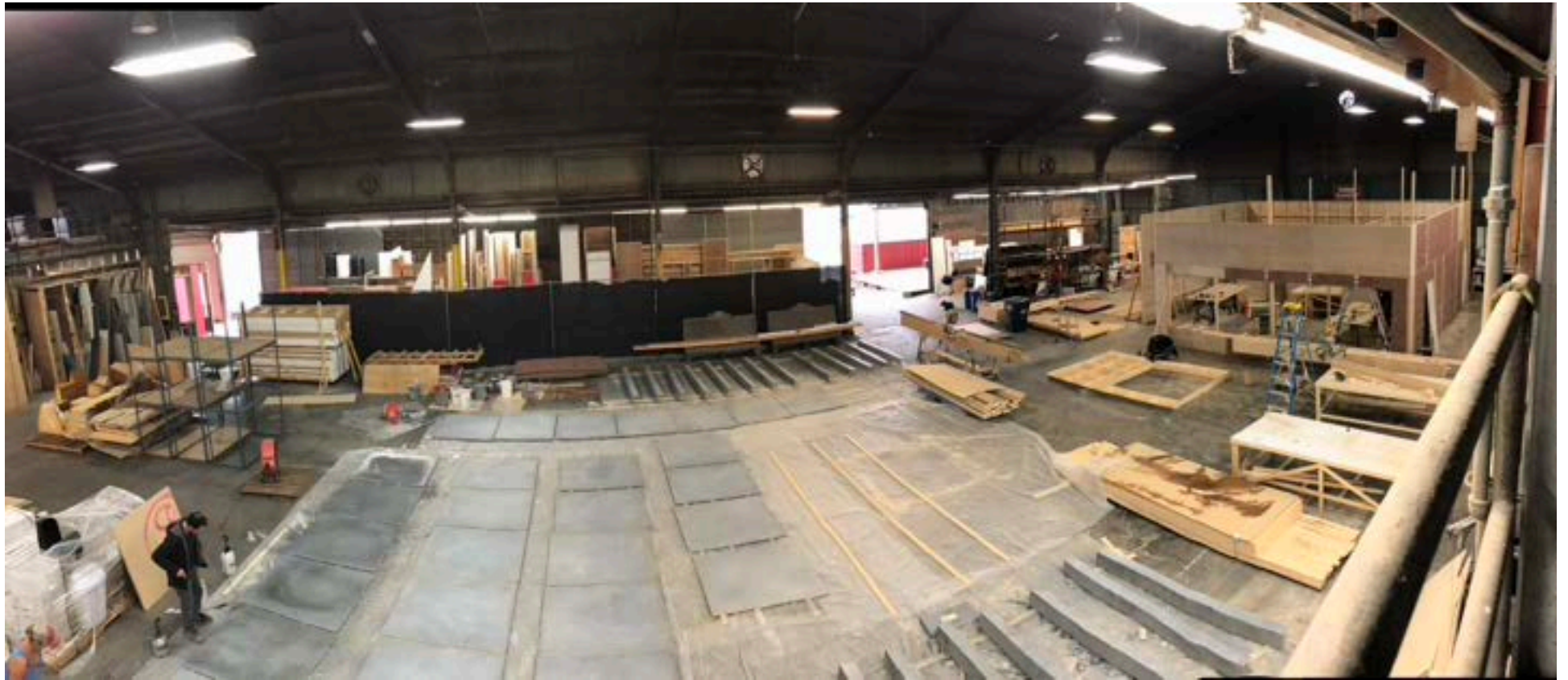








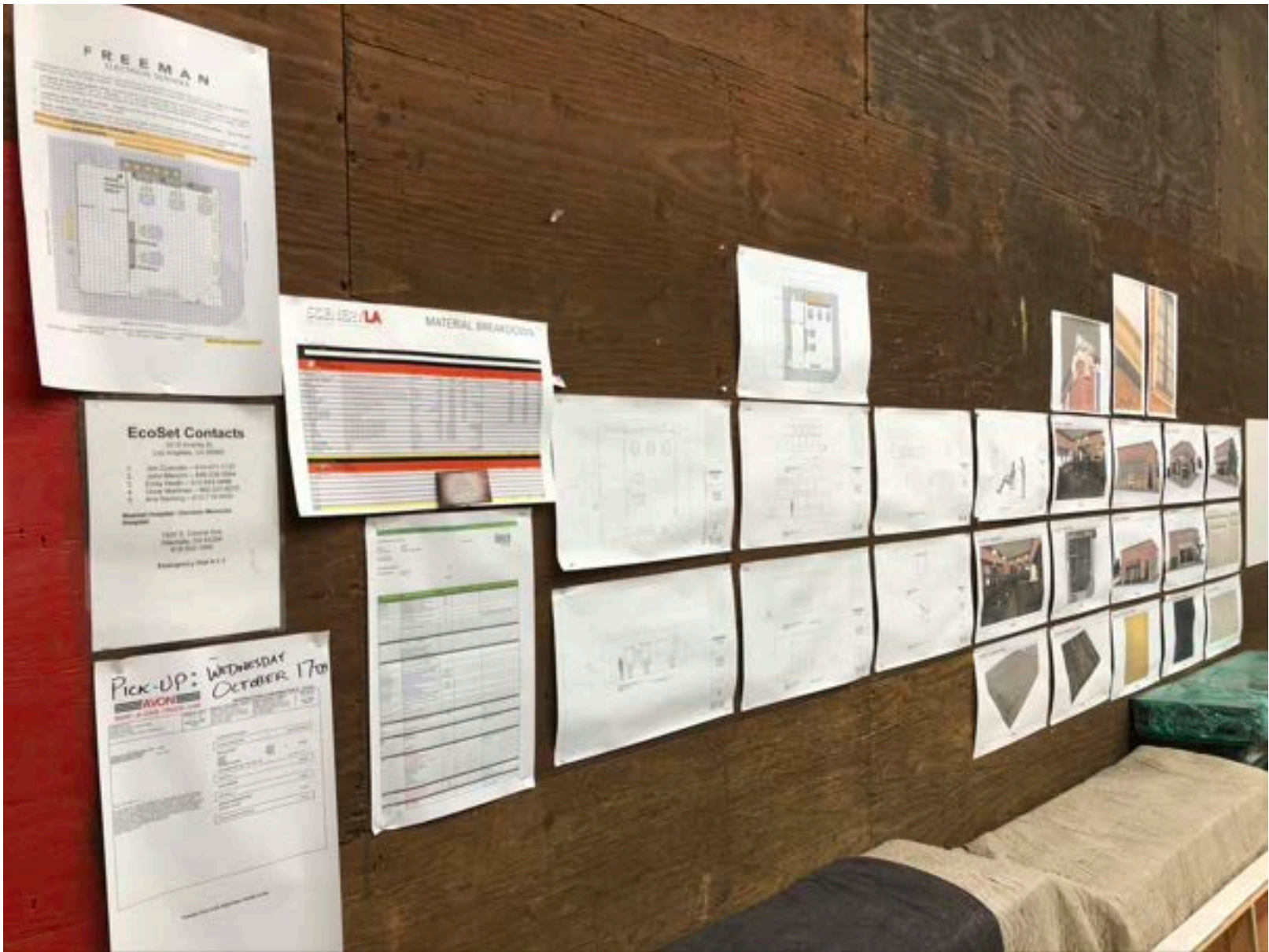




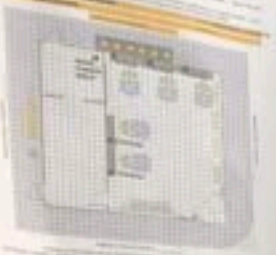








FREEMAN
LEARNING CENTER



EcoSet Contacts

- 1. [Name] - [Phone]
- 2. [Name] - [Phone]
- 3. [Name] - [Phone]
- 4. [Name] - [Phone]
- 5. [Name] - [Phone]

Pick-up: WEDNESDAY
OCTOBER 17th

SCS ISN/LA MATERIAL BREAKOUTS

Material	Quantity	Notes
[Material]	[Quantity]	[Notes]
[Material]	[Quantity]	[Notes]
[Material]	[Quantity]	[Notes]

Material	Quantity	Notes
[Material]	[Quantity]	[Notes]
[Material]	[Quantity]	[Notes]
[Material]	[Quantity]	[Notes]



A grid of approximately 20 smaller documents, including architectural drawings, photographs of buildings, and material samples.



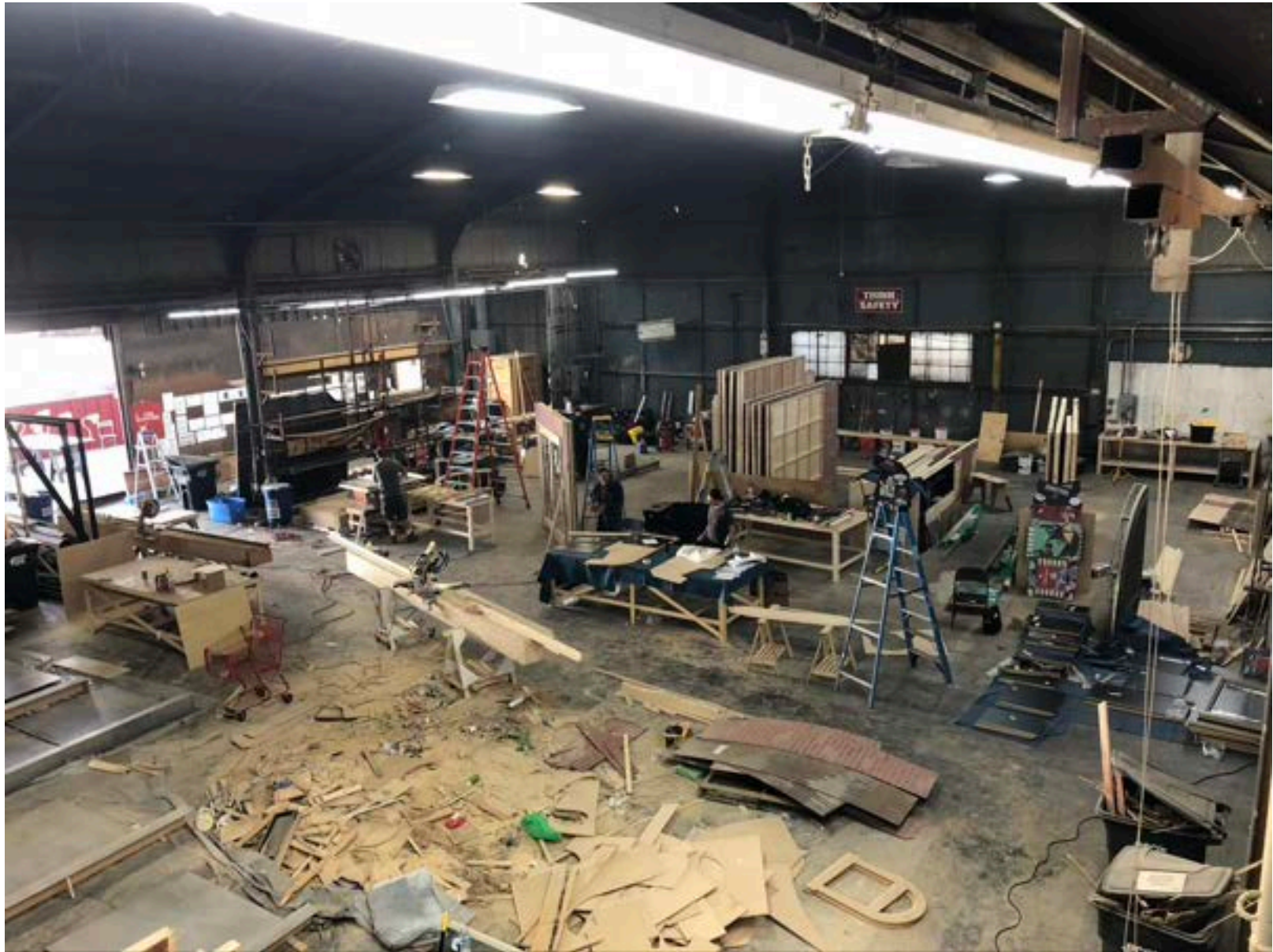
























OLD SPICE LEGACY'S PIZZERIA

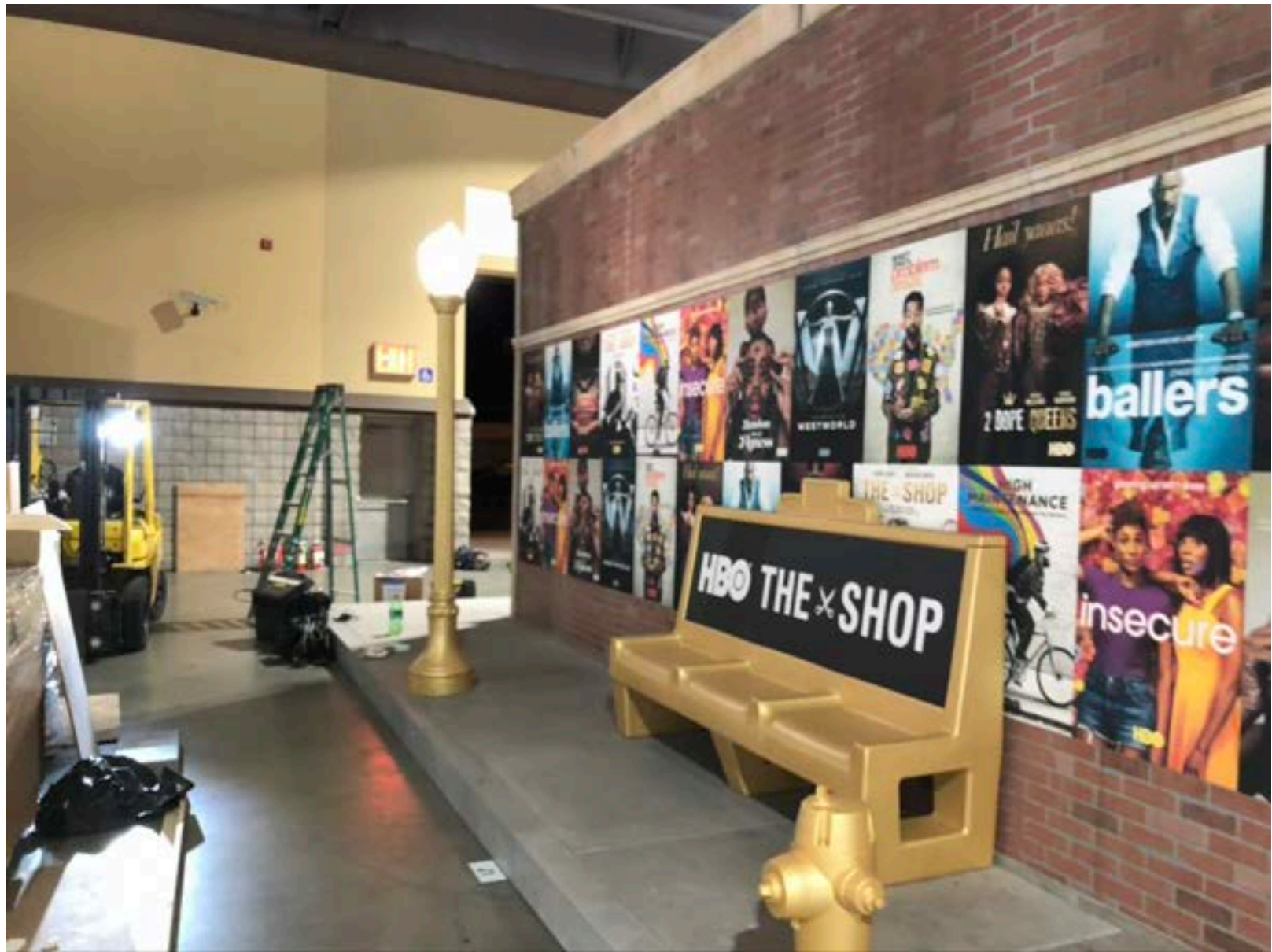














**DOGOOD.
BEGOOD.
KICKASS.**

«gallagher»