

Nana's Pancakes

Production Design

EXT. RUINS – EVENING (CIRCA 2084)

LIMS SOUTH PARKING LOT



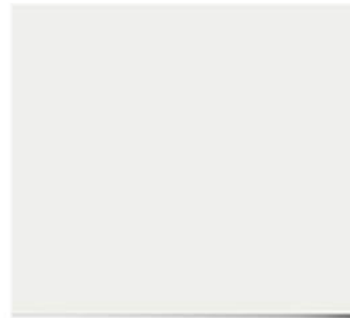
EXT. RUINS - COLOR PALETTE



SW 0077
Classic French Gray
Interior / Exterior



SW 6258
Tricorn Black
Interior / Exterior



SW 7006
Extra White
Interior / Exterior



SW 7019
Gauntlet Gray
Interior / Exterior



SW 7029
Agreeable Gray
Interior / Exterior



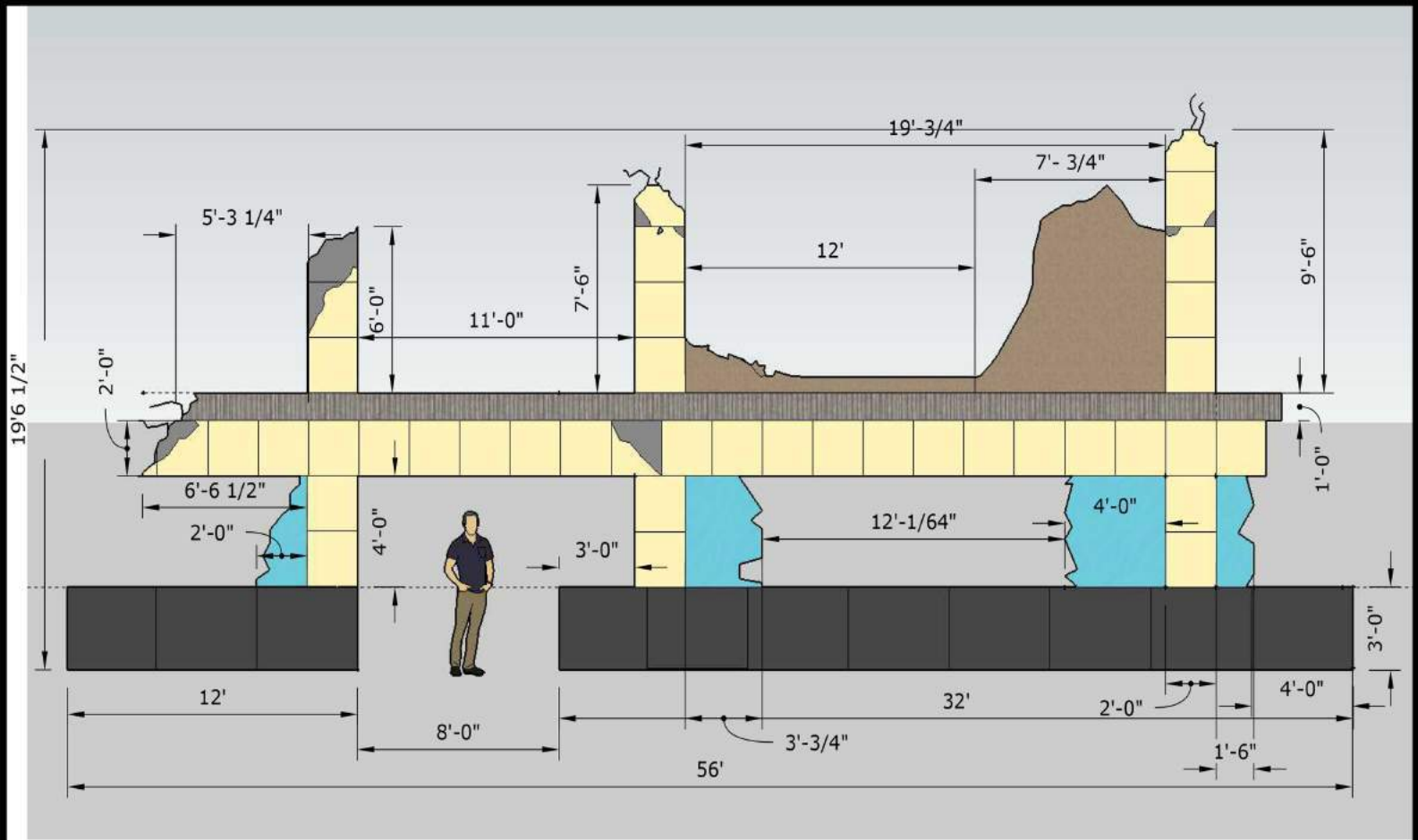
SW 7647
Crushed Ice
Interior / Exterior



SW 7660
Earl Grey
Interior / Exterior

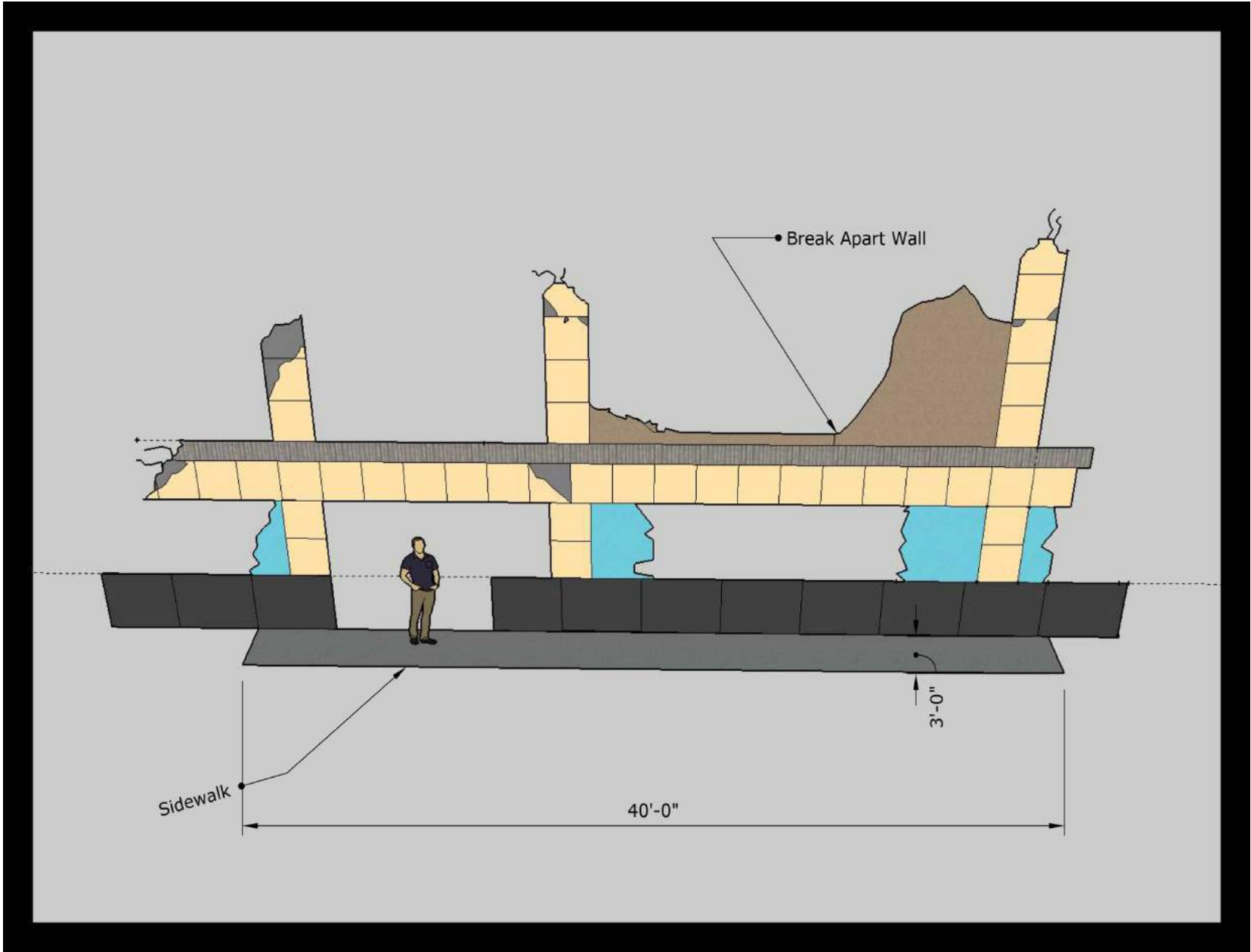


SW 7674
Peppercorn
Interior / Exterior



Tan Panel 2',2'

Black Marlite 4',4'



EXT. RUINS - TEXTURES



Saving Private Ryan

Textures will incorporate charred, crumbled edges on destroyed building concrete walls and columns, as well as exposed torn metal rebar; remnants of explosive impacts from ongoing bullets and bombs.



Saving Private Ryan

Rubble will consist of both real and faux debris made from broken concrete, mangled metal, and foam pieces spread throughout the set.



LIMS STAGE 1

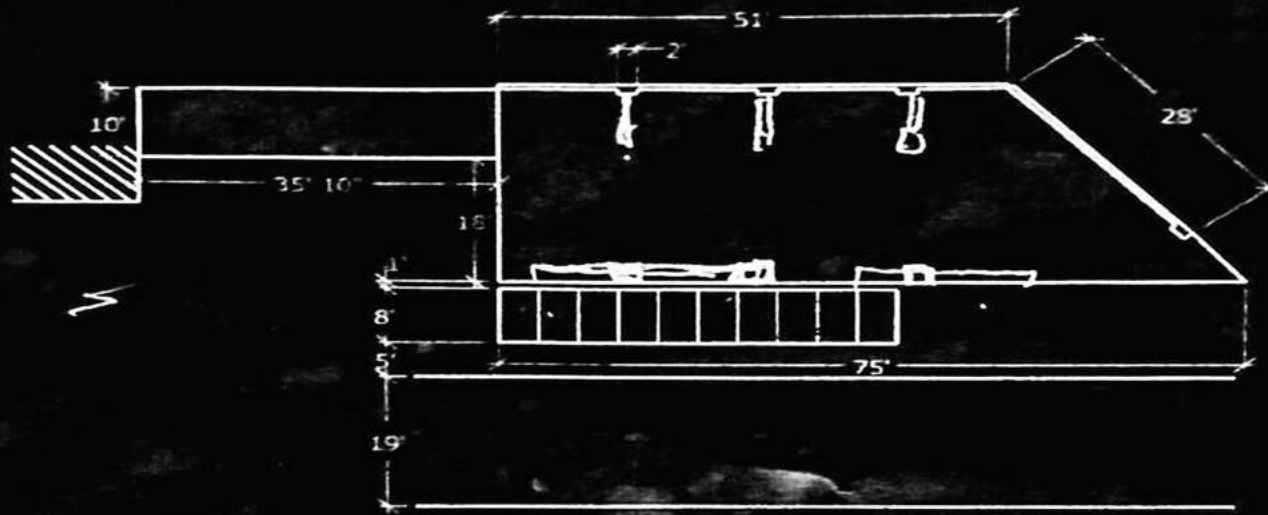
LIMS SOUTH
PARKING LOT

LIMS STAGE 2

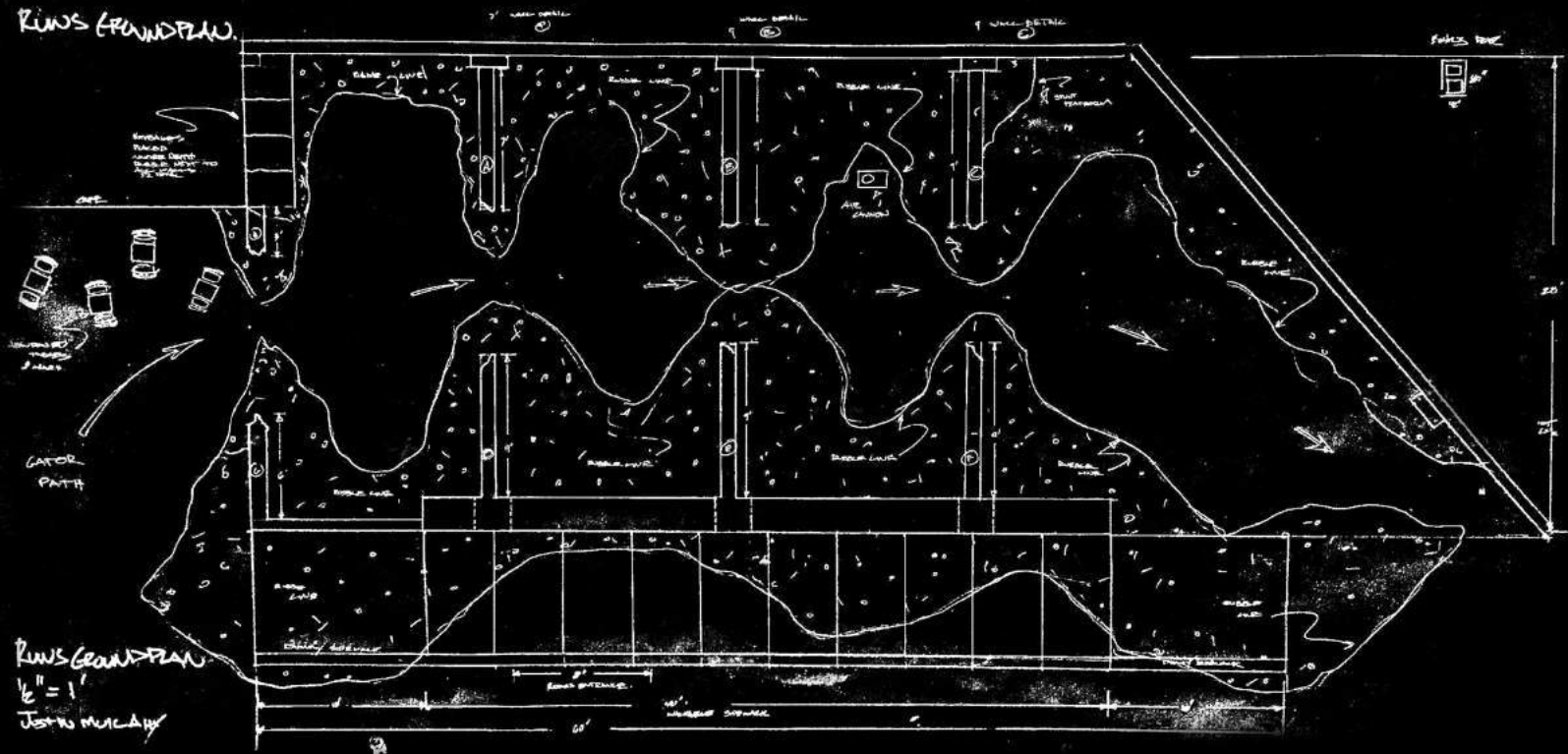
LIMS STAGE 3

LIMS THEATER

RUINS



RUN'S GROUND PLAN



RUN'S GROUND PLAN

1/2" = 1'

JUST TO MUCK UP

EXT. RUINS - PROPS & REFERENCE PHOTOS



The weaponry is similar in appearance to the Mark 19 / M2







ALLIE - PROPS

Holographic Tablet



EXT. CABIN

LIMS STAGE 2





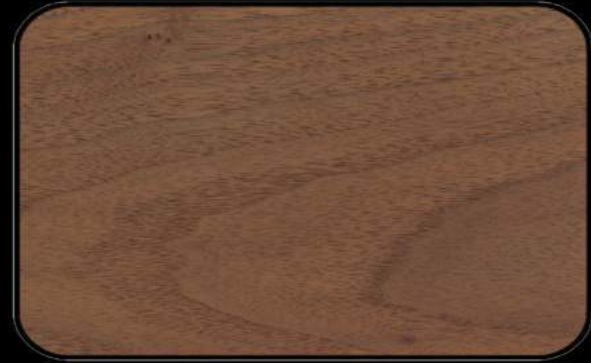
INT. CABIN - COLOR PALETTE



INT. CABIN - COLOR PALETTE



Red Oak



Walnut



Maple



Cherry

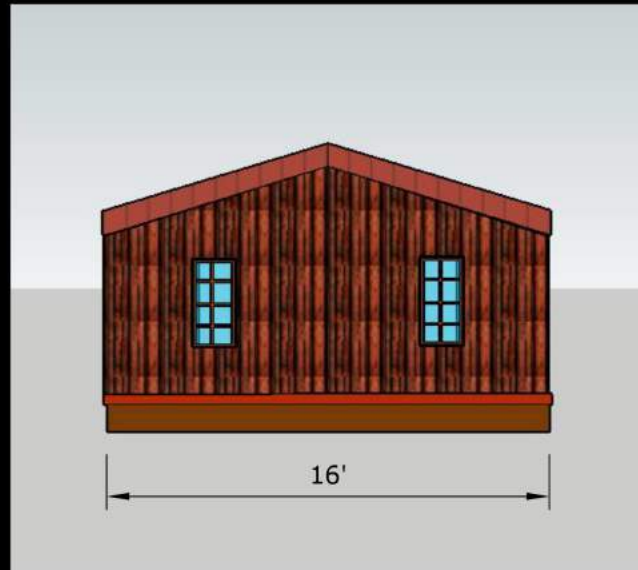
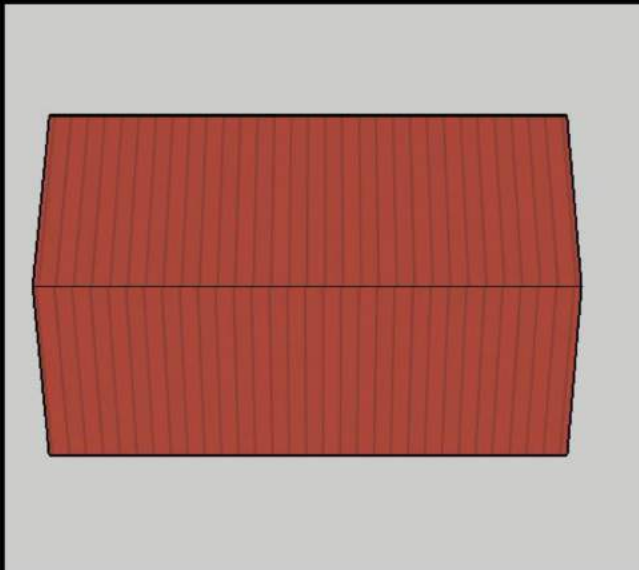
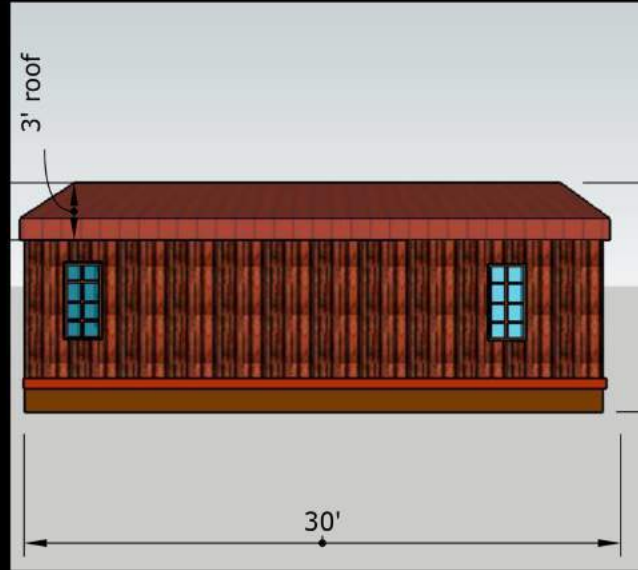
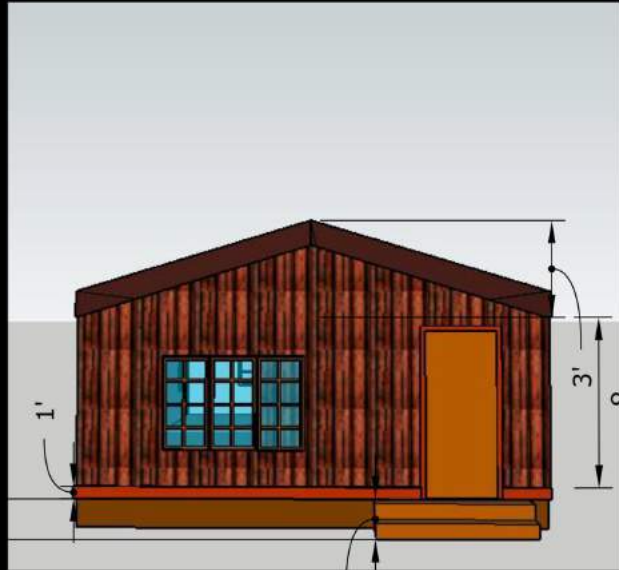
INT. CABIN - TEXTURES

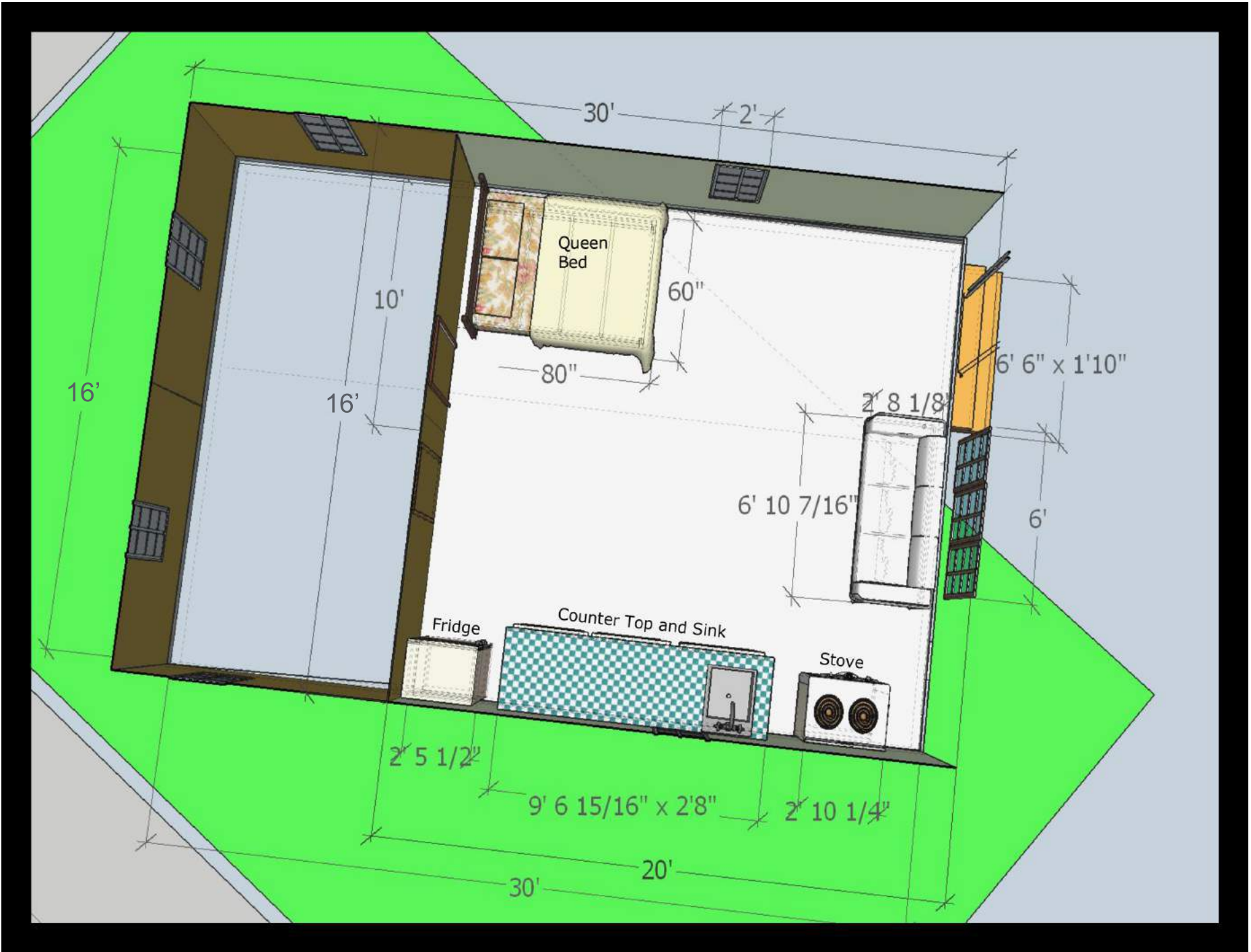
Cabin interior colors and textures will include various shades of lighter oak wood flooring, muted medium-light gray painted walls, and a darker walnut trim around windows and doors, as well as exposed wooden beams.



Nondescript furniture and minimal decor.









INT. CABIN - SET DRESSING CHOICES

















PORTABLE WATER JUG



MIXING BOWL



FLASKS



COFFEE POTS



OLD CAST IRON PAN



PORTABLE STOVES



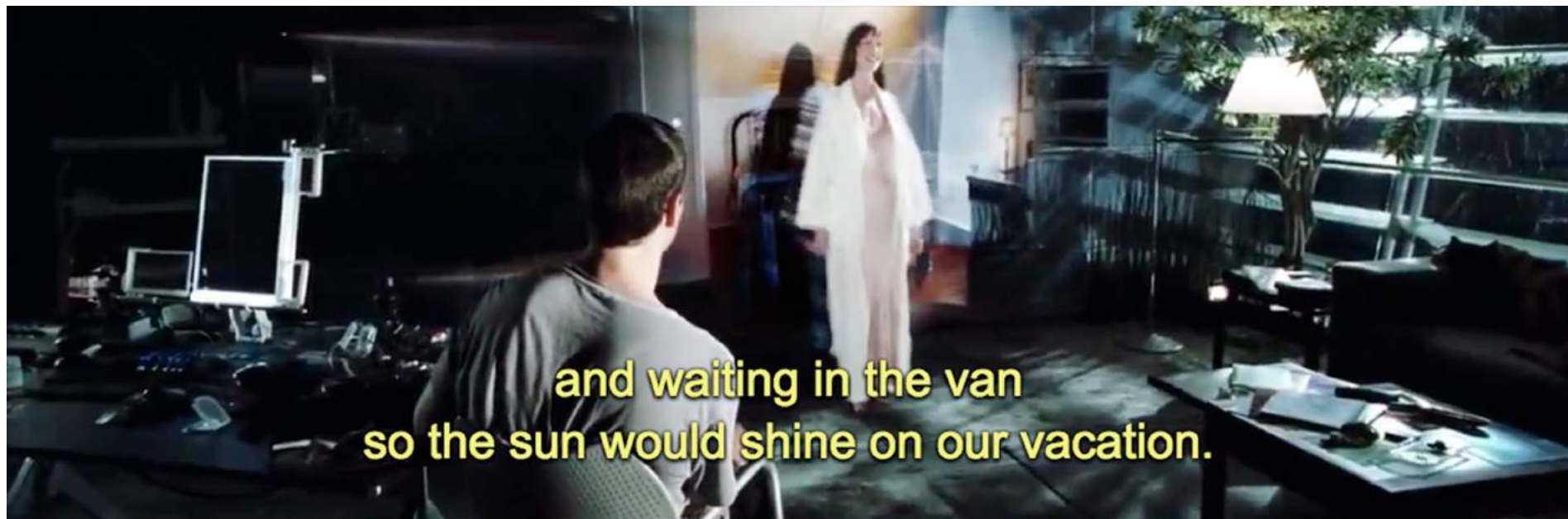
EXT. CABIN - SET DRESSING CHOICES





LIGHTING REFERENCE
INT. CABIN





and waiting in the van
so the sun would shine on our vacation.





You gotta keep running.

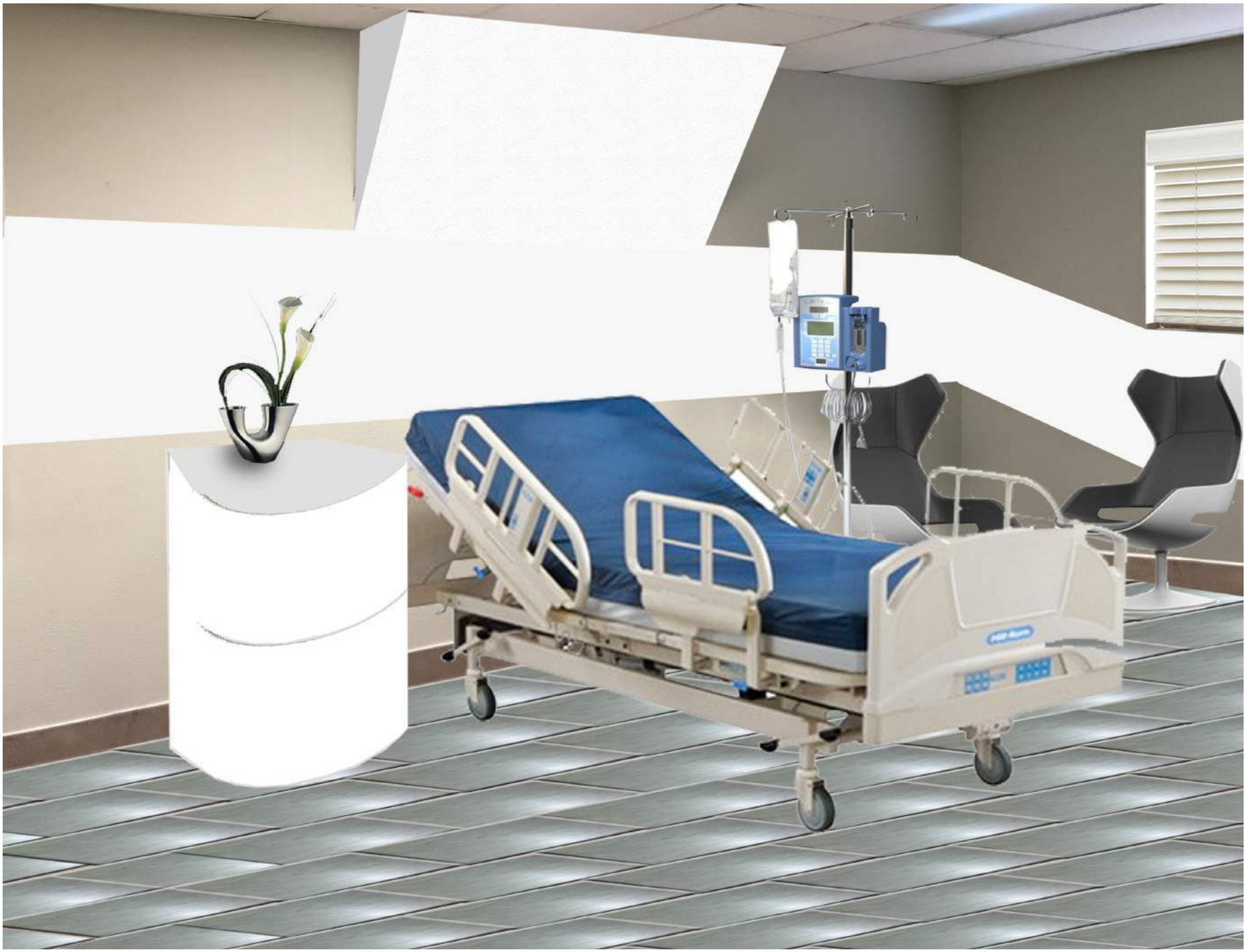




INT. HOSPITAL ROOM (CIRCA 2050)

LIMS UPSTAIRS ROOM





INT. HOSPITAL - COLOR PALETTE



#8a9ba4
submarine



#c1d4e6
onahau



#c0d3e5
link water



#5a7579
blue bayoux



#96b2c1
nepal



#5a716b
william



#87989d
submarine



#94a7ae
botticelli



#050c0f
hoki



#83908e
granny smith



#83949c
submarine



#e0e8f5
solitude



#dfe7f4
clear day



#677e80
hoki



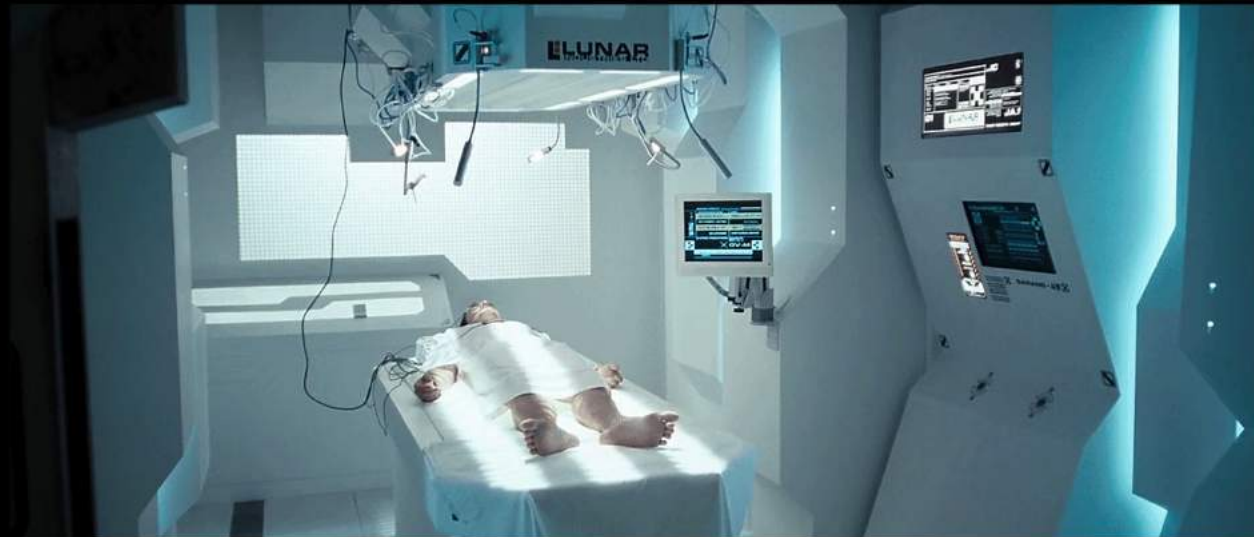
#c4d9ea
onahau

INT. HOSPITAL - FLOOR TEXTURE



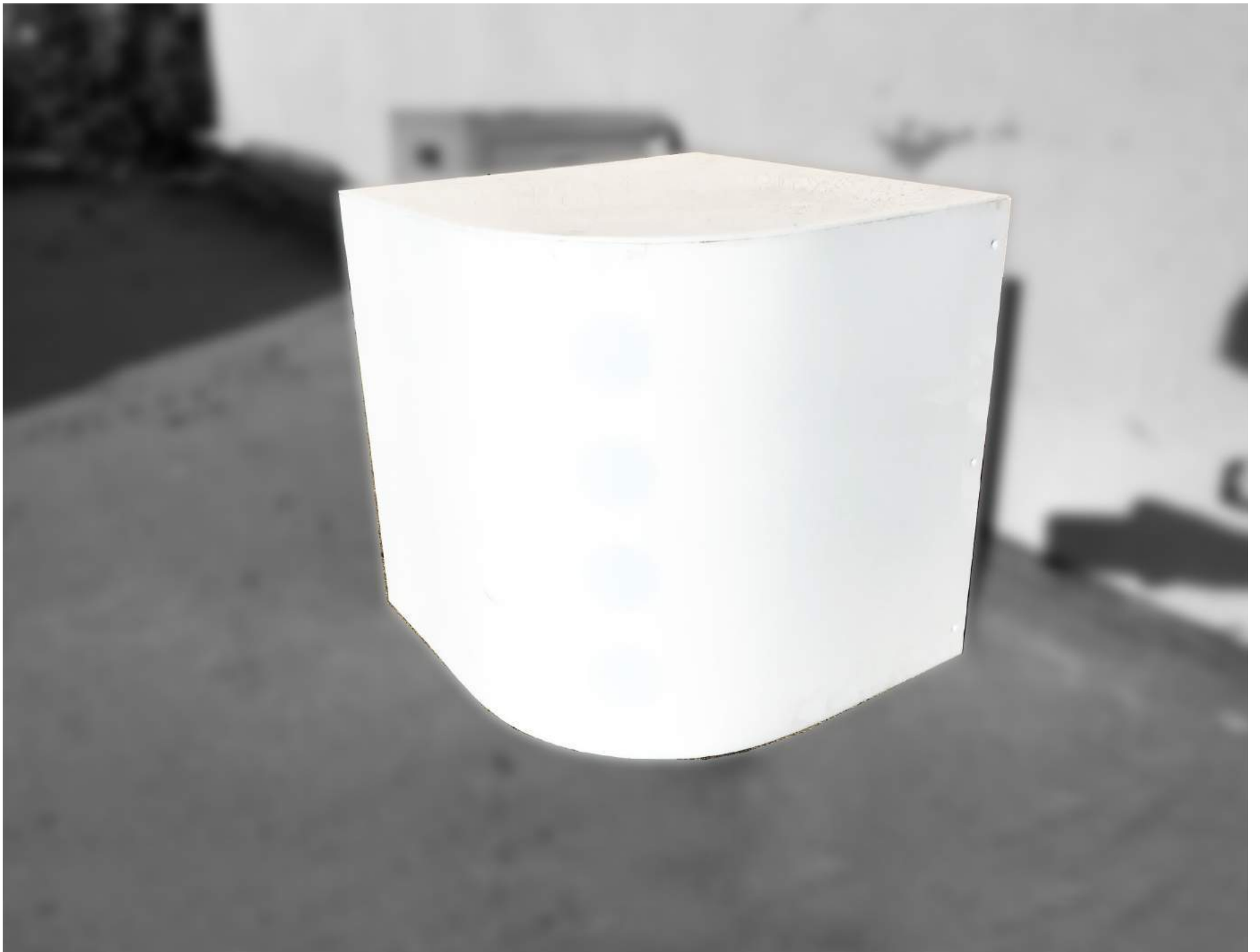
INT. HOSPITAL - REFERENCE PHOTOS

Simple, clean, smooth lines and curves for an ultra-modern futuristic look.



INT. HOSPITAL - SET DRESSING CHOICES





LIGHTING REFERENCE
INT. HOSPITAL ROOM (CIRCA 2050)

LIMS UPSTAIRS ROOM





Now it's not just vampires
we gotta worry about,



we're gonna have to take on
the rest of the world, too.





You worry too much, old man.











Name.
Todd.



Nana's Pancakes

Construction Budget Details

Date: 2-09-2017

SET LOCATION	#	TITLE/SET DRESSING/WORK	BUDGET
LIMS South Parking Lot	1	EXT. RUINS – EVENING (CIRCA 2084)	
		Build 4 collapsed walls from back columns	
		Build collapsed building front facade columns	
		Crush Justin's old vehicle	
		Spread real & faux rubble piles/pieces	
		Spread twisted metal, broken human items	
		Hero Prop: 1 – Holographic Tablet	
		Hero Prop: 1 – Allie's Watch	
		Hero Prop: 1 – Allie's Headset	
		Hero Prop: 1 – Allie's Scope	
		Hero Prop: 1 – Allie's Dusty Doll	
		Hero Prop: Gator Vehicle with Weapons	
		Hand Props: 10 – Guns/Weaponry	
		Props-tumes: 10 – Flack Jackets	
		Props-tumes: Helmets	
		Practical FX: Set up collapsible wall	
		Practical FX: Set up 2 air canons	
LIMS Stage 3	2	INT. CABIN – DAWN	
		Set Prop: Small Bed	
		Set Props: Small Dining Table & Chairs	
		Set Props: Bedside Table	
		Set Dressing: Build Little Kitchenette	
		Hero Prop: 1 – Allie's Gun	
		Hero Prop: 1 – Holographic Tablet	
		Hero Prop: 1 – Allie's Doll	
LIMS Stage 3	3	INT. CABIN – LATE MORNING	
		Set Prop: Small Bed	
		Hero Prop: 1 – Allie's Tablet	
		Hand Prop: 1 – Ethan / Coffee Pot	
		Hand Prop: 2 – Plates	
		Hand Prop: 2 – Forks	
		Hand Prop: Supply Pack	
		Consumable Hand Prop: Blueberry Pancakes	

		Set Prop: 1- Pancake Mix Box or Bag of Flour	
		Set Prop: 1- Jar of Molasses	
		Set Prop: 1- Small of Jar of Vanilla	
LIMS Stage 3	4	INT. CABIN – LATE MORNING	
		Set Prop: Small Bed	
		Set Prop: Bedside Table	
		Set Prop: 1 – Pancake Mix Box or Bag of Flour	
		Set Prop: Kitchen Burner	
		Hero Prop: 1 – Allie’s Doll	
		Hero Prop: 1 – Holographic Tablet	
		Hero Prop: 1 – Allie’s Gun	
		Hand Prop: 1 – Allie / Tea Pot	
		Hand Prop: 1 – Tin of Coffee	
		Hand Prop: 1 – Cooking Pan	
		Hand Prop: 2 – Coffee Cups	
		Hand Prop: 1 – Bowl for making pancakes	
		Hand Prop: 1 – Mixing Spoon	
		Hand Prop: 1 – Whisky Flask	
		Props-tumes: Ethan/Fatigues, Heavy Rucksack	
		Consumable Hand Prop: Blueberry Pancakes	
LIMS Stage 3	5	INT. CABIN – EVENING	
		Set Prop: Small Bed	
		Hero Prop: 1 – Allie’s Doll	
		Hero Prop: 1 – Allie’s Pack	
LIMS Stage 3	6	EXT. RUINS – EVENING	
		Set Dressing: Deserted Ruins	
		Set Dressing: Slabs of Broken Concrete	
		Set Dressing: Twisted Metal	
		Hero Prop: Allie’s Weapon	
		Hero Prop: Ethan’s Weapon	
LIMS Stage 3	7	INT. CABIN – AFTERNOON	
		Hand Prop: 1 – Bowl for making pancakes	
		Hand Prop: 1 – Mixing Spoon	
		Hand Prop: 1 – Tea Pot	
		Consumable Hand Prop: Blueberry Pancakes	
		Set Prop: Bedside Table	
		Hero Prop: 1 – Allie’s Gun	
		Hero Prop: 1 – Allie’s Doll	
LIMS UPSTAIRS ROOM	8	INT. HOSPITAL ROOM – DAY (CIRCA 2050)	

		Set Prop: Hospital Bed	
		Set Prop: Health Monitor with wires	
		Set Prop: Chair	
		Set Prop: EKG Health Monitor	
		Set Prop: Life Support Machine	
		Set Prop: Tubes	
		Hero Prop: 1 – Allie 2's Doll	
		Hero Prop: 1 – Holographic Tablet	

TOTAL CONSTRUCTION BUDGET

\$_____